



REGIONAL SPECIALISED METEOROLOGICAL CENTRE-TROPICAL CYCLONES, NEW DELHI  
TROPICAL CYCLONE ADVISORY BULLETIN NO. 12

FROM: RSMC –TROPICAL CYCLONES, NEW DELHI

TO: STORM WARNING CENTRE, NAYPYI TAW (MYANMAR)  
STORM WARNING CENTRE, BANGKOK (THAILAND)  
STORM WARNING CENTRE, COLOMBO (SRILANKA)  
STORM WARNING CENTRE, DHAKA (BANGLADESH)  
STORM WARNING CENTRE, KARACHI (PAKISTAN)  
METEOROLOGICAL OFFICE, MALE (MALDIVES)  
OMAN METEOROLOGICAL DEPARTMENT, MUSCAT (THROUGH RTH JEDDAH)  
YEMEN METEOROLOGICAL SERVICES, REPUBLIC OF YEMEN (THROUGH RTH JEDDAH)  
NATIONAL CENTRE FOR METEOROLOGY, UAE (THROUGH RTH JEDDAH)  
PRESIDENCY OF METEOROLOGY AND ENVIRONMENT, SAUDI ARABIA (THROUGH RTH JEDDAH)  
IRAN METEOROLOGICAL ORGANISATION, (THROUGH RTH JEDDAH)  
QATAR METEOROLOGICAL DEPARTMENT (THROUGH RTH JEDDAH)

TROPICAL CYCLONE ADVISORY NO. 12 FOR NORTH INDIAN OCEAN (THE BAY OF BENGAL AND ARABIAN SEA) VALID FOR NEXT 120 HOURS ISSUED AT 1630 UTC OF 03.06.2020 BASED ON 1500 UTC OF 03.06.2020.

SUB: DEEP DEPRESSION 'NISARGA' OVER INTERIOR MAHARASHTRA

THE CYCLONIC STORM 'NISARGA' OVER COASTAL MAHARASHTRA MOVED NORTHEASTWARDS WITH A SPEED OF ABOUT 25 KMPH DURING PAST 06 HOURS, WEAKENED INTO A DEEP DEPRESSION AND LAY CENTRED AT 1500 UTC OF TODAY THE 03<sup>RD</sup> JUNE, 2020 OVER INTERIOR MAHARASHTRA, NEAR LATITUDE 19.6°N AND LONGITUDE 74.0°E, 40 KM SOUTH OF NASIK (42921), 120 KM NORTH-NORTHEAST OF PUNE (43063) AND 140 KM WEST-SOUTHWEST OF AURANGABAD (43013).

IT IS VERY LIKELY TO MOVE NORTHEASTWARDS AND WEAKEN INTO A DEPRESSION BY 0000 UTC OF 4<sup>TH</sup> JUNE 2020.

FORECAST TRACK AND INTENSITY ARE GIVEN IN THE FOLLOWING TABLE:

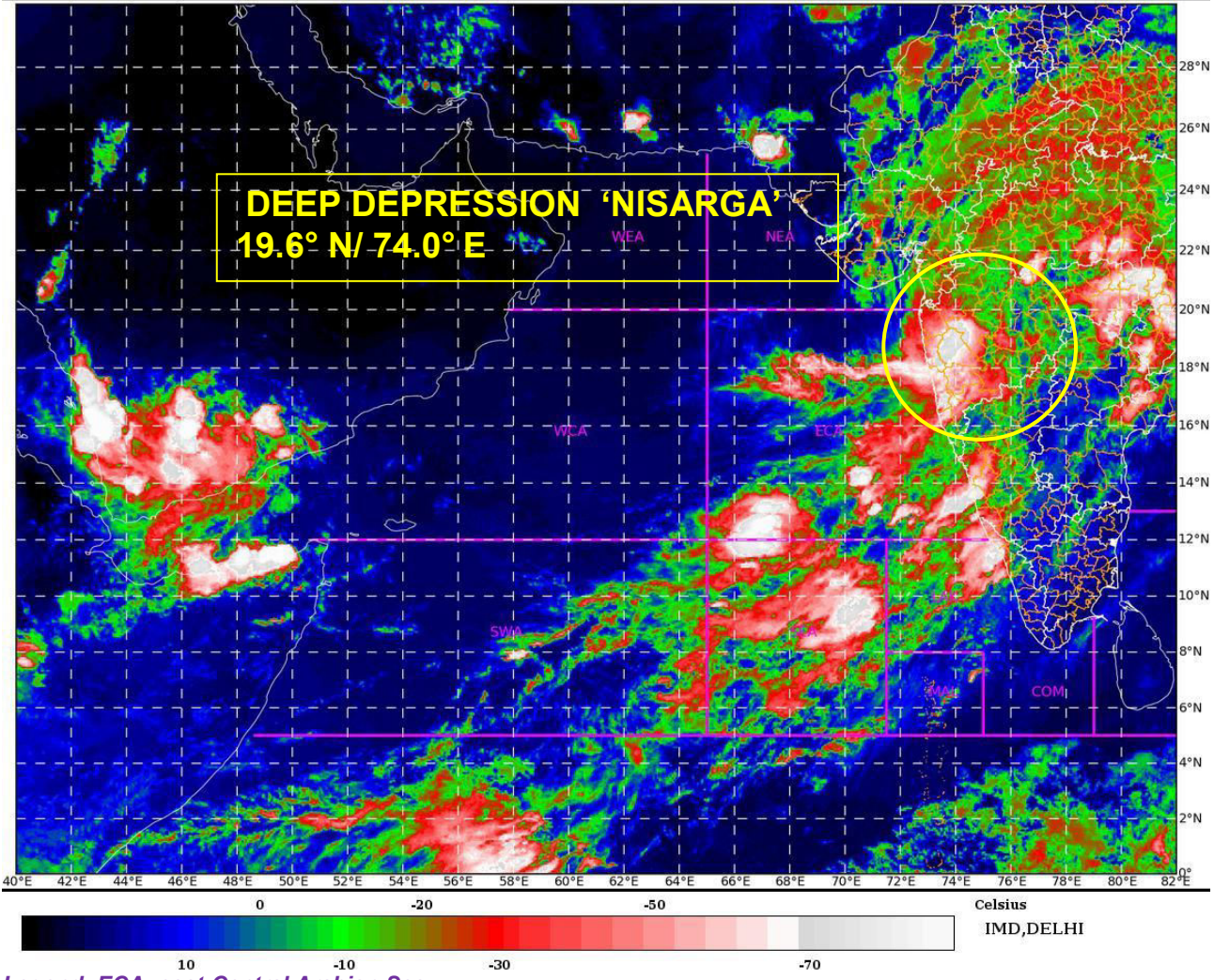
DATE/TIME(UTC)	POSITION (LAT. °N/ LONG. °E)	MAXIMUM SURFACE (KMPH)	SUSTAINED WIND SPEED	CATEGORY OF CYCLONIC DISTURBANCE
03.06.20/1500	19.6/74.0	55-65	GUSTING TO 75	DEEP DEPRESSION
03.06.20/1800	19.7/74.3	50-60	GUSTING TO 70	DEEP DEPRESSION
04.06.20/0000	20.5/75.0	40-50	GUSTING TO 60	DEPRESSION
04.06.20/0600	21.1/75.5	30-40	GUSTING TO 50	DEPRESSION

AS PER INSAT-3D SATELLITE IMAGERY BASED ON 1500 UTC OF 03<sup>RD</sup> JUNE, THE SYSTEM HAS FURTHER WEAKENED OVER THE LAND. INSAT 3D FURTHER SHOWS ASSOCIATED BROKEN LOW/MEDIUM CLOUDS WITH EMBEDDED INTENSE TO VERY INTENSE CONVECTION OVER EASTCENTRAL ARABIAN SEA BETWEEN LATITUDE 13.0 °N TO 20.0°N AND LONGITUDE 70.0°E TO 75.0°E. MINIMUM CLOUD TOP TEMPERATURE (CTT) IS MINUS 86°C.

(V. R DURAI)  
SCIENTIST-E,  
RSMC, NEW DELHI

PROBABILITY OF CYCLOGENESIS (FORMATION OF DEPRESSION)

NIL: 0%, LOW: 1-25%, FAIR: 26-50%, MODERATE: 51-75% AND HIGH: 76-100%



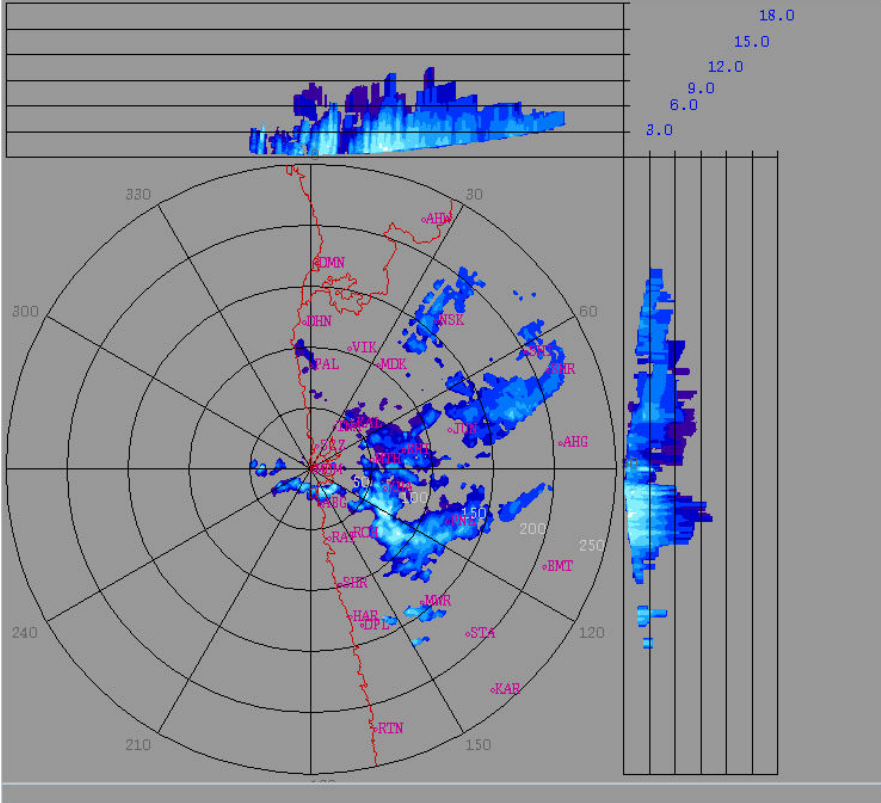
**PROBABILITY OF CYCLOGENESIS (FORMATION OF DEPRESSION)**  
**NIL: 0%, LOW: 1-25%, FAIR: 26-50%, MODERATE: 51-75% AND HIGH: 76-100%**

2020/06/03

15:49:11 (UTC)

MAX(Z)

DWR MUMBAI  
( 18.9013N , 72.8076E , 100.00 mts )



Height : 18.0 Km  
 Layer Spacing : 0.100 Km  
 Z (Lo, Hi) : -32.0, 95.0 dBZ  
 Grid size : 1 Km  
 Display Range : 250 Km  
 Display Res : 1.0 Km/Pix  
 DDR Enable : Yes  
 Scan Elev (Lo, Hi) : 0.2, 21.0 Deg  
 PRF (Lo, Hi) : 450, 600 Hz  
 Scan Res : 150 mts  
 Scan RPM : 2.0  
 Log Threshold : 2 dB  
 DTF : 42  
 Pulse Width : 1.0  
 Notch Width : 54.0 Hz  
 SQI : 0.25  
 CSR : 20  
 Scan Range : 240 Km  
 Preprocessings : NONE

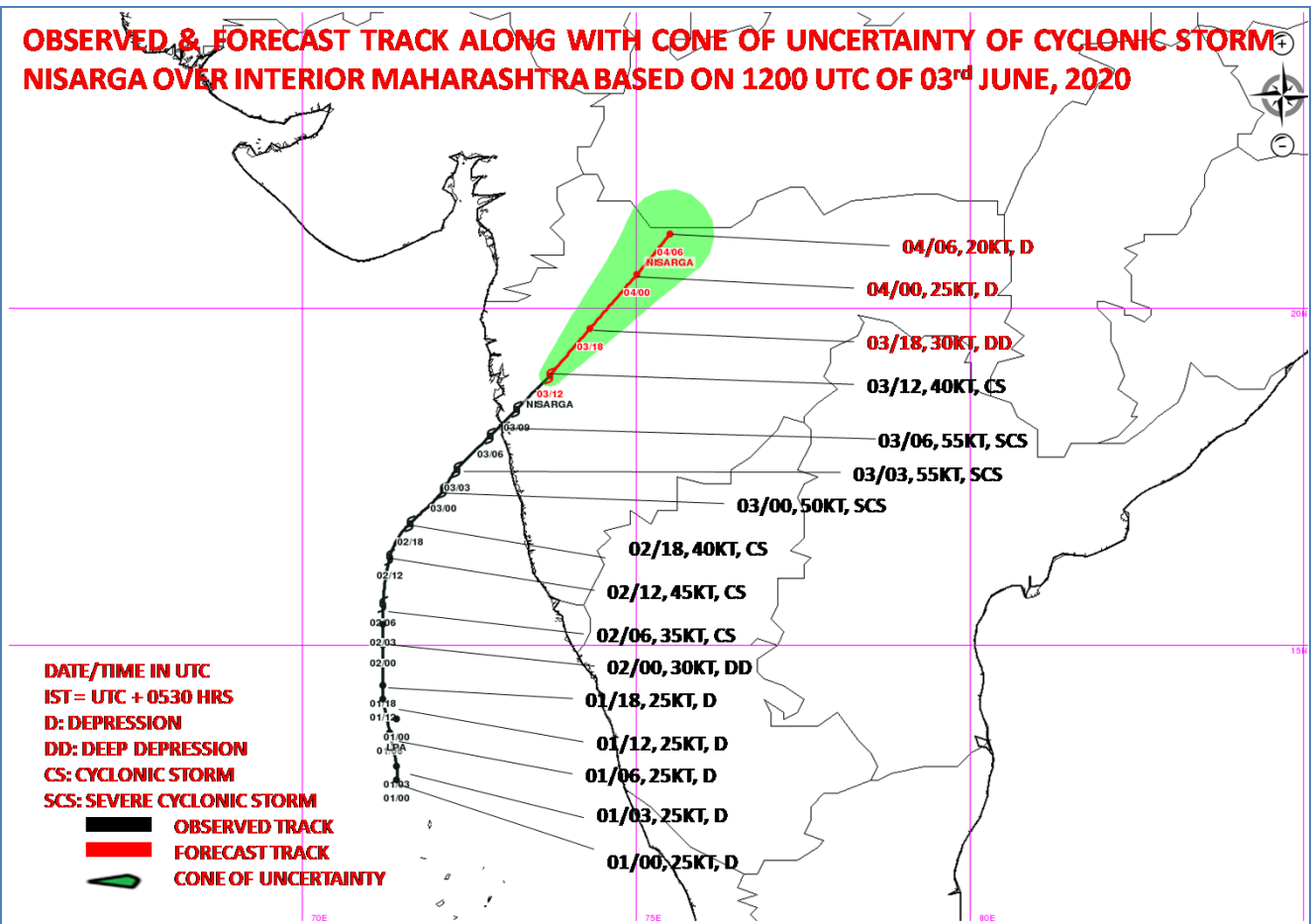
dBZ

No Data
60.7: > 65.0
56.4: 60.7
52.1: 56.4
47.8: 52.1
43.5: 47.8
39.2: 43.5
34.9: 39.2
30.7: 34.9
26.4: 30.7
22.1: 26.4
17.8: 22.1
13.5: 17.8
9.2: 13.5
4.9: 9.2
0.6: 4.9

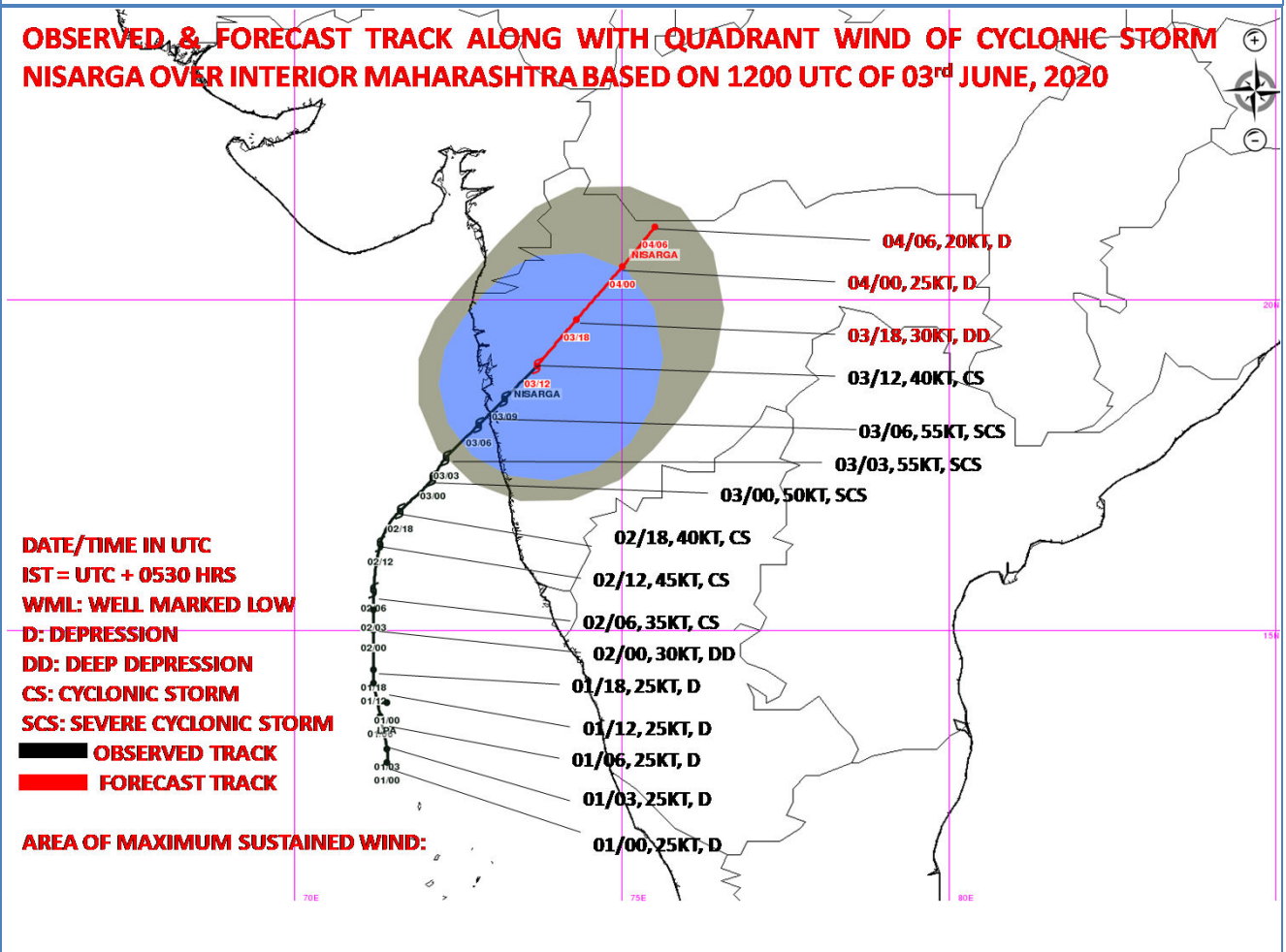
**DOPLER WEATHER RADAR MUMBAI AT 14:39:13 HOURS IST OF 03.06.2020**

**PROBABILITY OF CYCLOGENESIS (FORMATION OF DEPRESSION)**  
**NIL: 0%, LOW: 1-25%, FAIR: 26-50%, MODERATE: 51-75% AND HIGH: 76-100%**

**OBSERVED & FORECAST TRACK ALONG WITH CONE OF UNCERTAINTY OF CYCLONIC STORM NISARGA OVER INTERIOR MAHARASHTRA BASED ON 1200 UTC OF 03<sup>rd</sup> JUNE, 2020**



**OBSERVED & FORECAST TRACK ALONG WITH QUADRANT WIND OF CYCLONIC STORM NISARGA OVER INTERIOR MAHARASHTRA BASED ON 1200 UTC OF 03<sup>rd</sup> JUNE, 2020**



**PROBABILITY OF CYCLOGENESIS (FORMATION OF DEPRESSION)**

**NIL: 0%, LOW: 1-25%, FAIR: 26-50%, MODERATE: 51-75% AND HIGH: 76-100%**